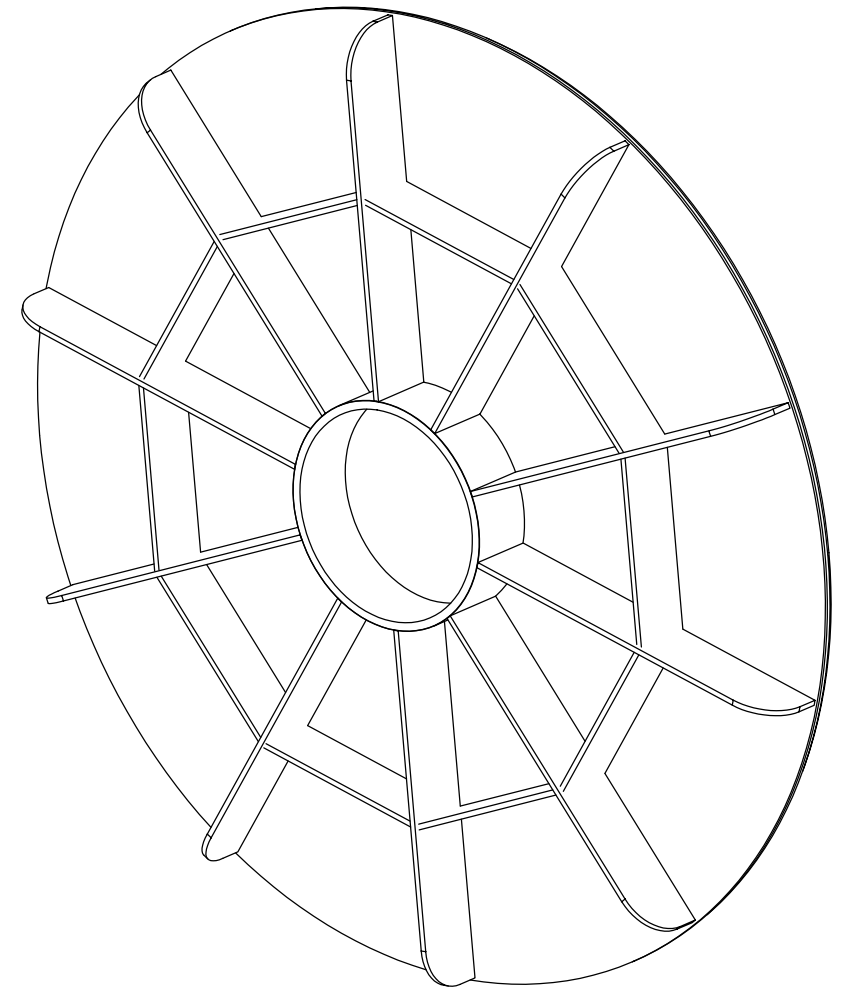
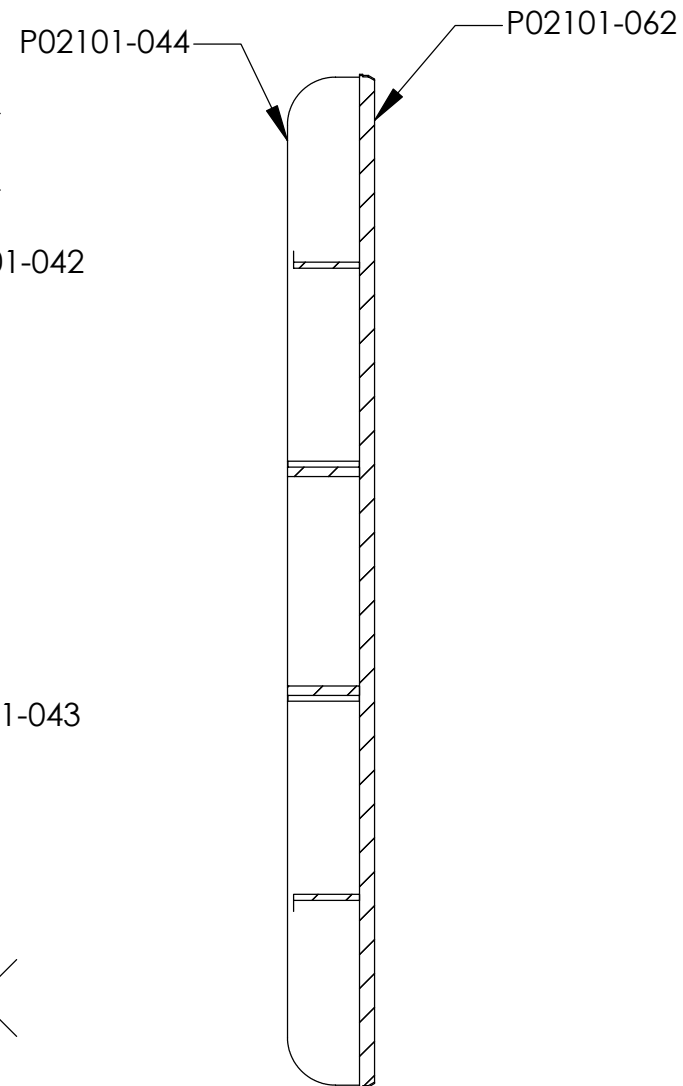
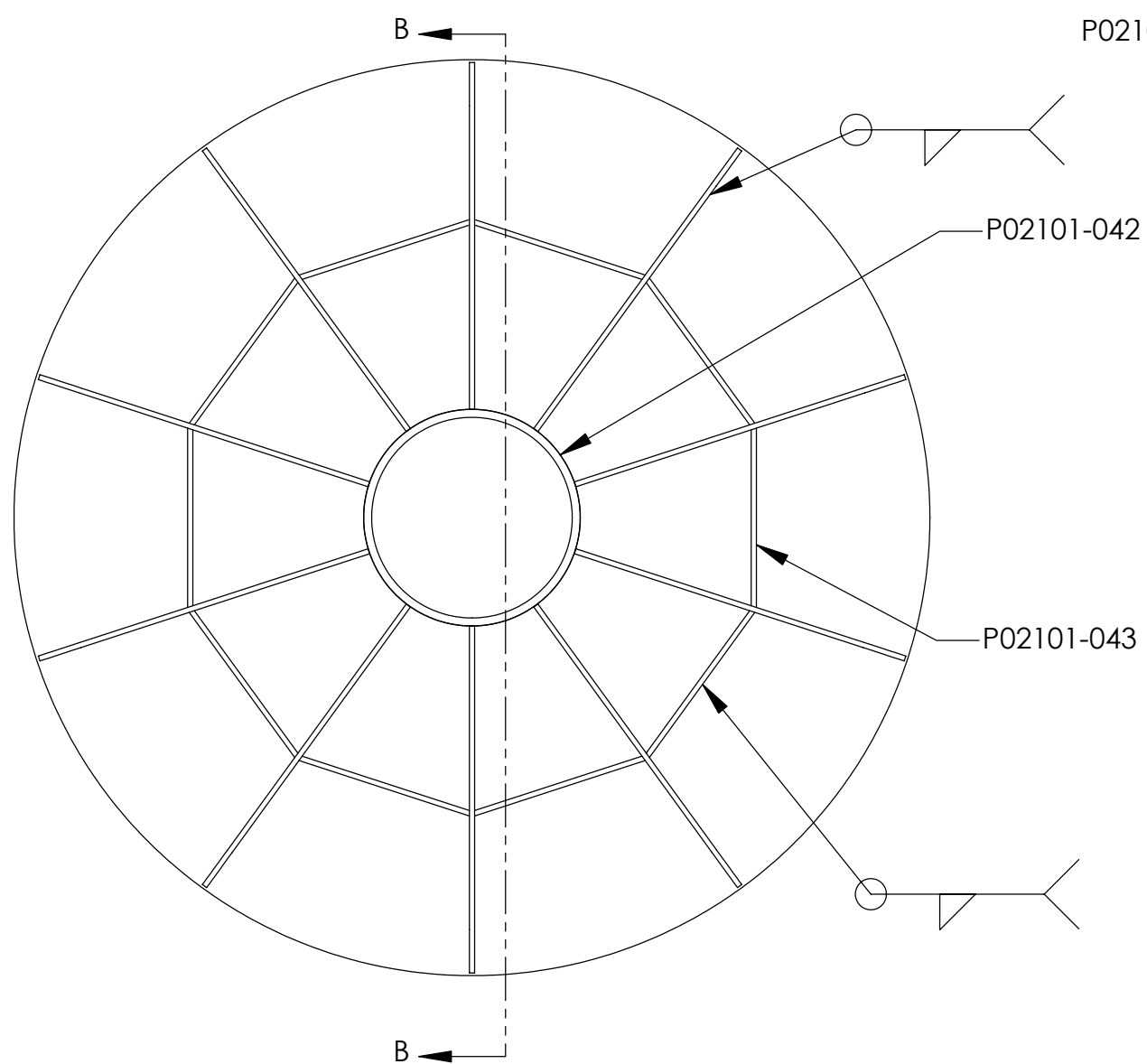


REVISIONS			
ZONE	REV	DESCRIPTION	DATE



SECTION B-B

UNLESS OTHERWISE SPECIFIED:	<h1>High Precision Devices</h1> <p>1668 Valtec Lane, Suite C, Boulder, Colorado 80301 Phone: (303) 447-2558 Fax: (303) 447-2548 Web Site: www.hpd-online.com</p>			
DIMENSIONS ARE IN INCHES DECIMAL TOLERANCES: .X ±.030 .XX ±.015 .XXX ±.005	TITLE: p02101-241 VJ plate assy			
ANGULAR TOL: ± 1° SURFACE ROUGHNESS $\sqrt{3}$	CONFIGURATION: -0 Default			
INTERNAL AND EXTERNAL SURFACE INTERSECTIONS SHALL BE UNIFORMLY FINISHED WITH CHAMFER .005/.010 X 45° OR RADIUS .005/.010. CHAMFER ALL THREADED HOLES 110% OF MAJOR DIAMETER X 45°	SIZE B	QTY PER ASSM: 1	SCALE: 1:4	SHEET 1 OF 1
MATERIAL:	DATE: 5/17/2004		REV A	
FINISH:	DRAWN BY: C. Danaher			